

# ATM-LEVAGE

Location de grues & mini grues

## JMG MC 32S



☎ 06 03 00 44 76

✉ atmlevage@groupeatm.com

🌐 www.atmlevage.com


RADIO-REMOTE CONTROL ON DRIVING, STEERING, BOOM MOVEMENTS, WINCH AND OTHER ACCESSORIES

FRONT-WHEELS DRIVE WITH COUNTER ROTATION

REMOVABLE COUNTERWEIGHTS



HYDRAULICALLY TELESCOPING SEQUENTIAL TYPE BOOM








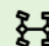
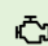
**Options :**

- HYDRAULIC WINCH
- HYDRAULIC FLY JIB
- MANUAL FLY JIB WITH EXTENSION
- NON-MARKING TIRES
- HYDRAULIC FORKS
- MAN BUCKET
-  ATEX CONVERSIONS
- CUSTOMIZED PAINTING

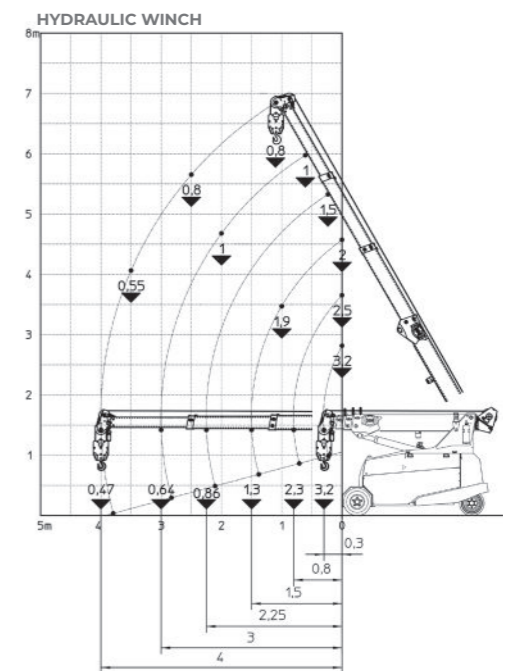
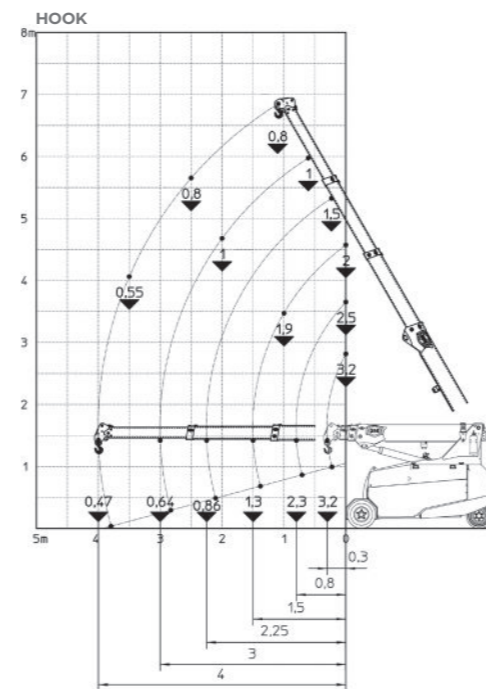


**i Technical features**




Max Capacity kg	 3,200
Dimensions mm	 2430x980x1696

 Front-wheels drive. 2 electric motors AC 3 kW 48V Insulation class H	<b>LMI.</b> Electronic safe load indicator and tilting moment limiter
 Total Kg. 3,400 Removable counterweights Kg. 700	 Automatic braking system on all wheels
 48 V - 500 Ah 8 working hours	 Fabricated from preformed and welded quality steel plate
 Front nr. 2 superelastic 200/50-10" Rear nr. 2 superelastic 16x6-8"	 +60°-15°
 Rear Steering angle -90°/+90°	 Motor driven pump 9 kW - 48 V AC, Insulation class H

**Load charts**



**EU Standards CE**

	UNI ISO 4301-2: A1
	2006/42 CE-2014/30 UE-2014/35 UE- 2000/14 e and subsequent modifications
	EN 13000:2014 ANSI/ASME B30.5-2011 and subsequent modifications

**Dimensions**

